



SAFETY TEST REPORT

Report No: FCS202311221A01

Issued for

Applicant:	PremierLash, LLC
Address:	Salt Lake City, UT 84101 USA
Product Name:	UV LED SpotLight System
Brand Name:	PremierLash
Model Name:	UV LED SpotLight System
Series Model:	UV LED SpotLight System
Test Standard:	EN 60598-2-5:2015 EN 60598-1:2020
Issued By: Dongguan Funas Testing Technology Co.,Ltd Add: Room 105 Floor Bao hao Technology Building 1 NO.15 Gong ye West Road Hi-Tech Industrial, Song shan lake Dongguan Tel: 769-27280901 Fax:769-27280901 http://www.fcs-lab.com	






Test Report issued under the responsibility of:



TEST REPORT IEC 60598-2-5 Luminaires Part 2: Particular requirements Section 5: Floodlights	
Report Number.....:	FCS202311221A01
Date of issue.....:	Nov 16,2023
Total number of pages.....:	44 pages
Name of Testing Laboratory preparing the Report..... :	Dongguan Funas Testing Technology Co., Ltd.
Applicant's name.....:	PremierLash, LLC
Address.....:	Salt Lake City, Utah 84101 USA
Test specification:	
Standard..... :	EN 60598-2-5:2015 EN 60598-1:2020
Test procedure.....:	CE-LVD
Non-standard test method.....:	N/A
TRF template used.....:	IECEE OD-2020-F1:2021, Ed.1.4
Test Report Form No.....:	IEC60598_2_5G
Test Report Form(s) Originator.....:	Intertek Semko AB
Master TRF.....:	2021-11-11
General disclaimer:	
The test results presented in this report relate only to the object tested. This report shall not be reproduced, except in full, without the written approval of the Issuing CE Testing Laboratory.	



Test item description :	UV LED SpotLight System	
Trade Mark(s) :		
Manufacturer :	FTS (Shenzhen) Co., Ltd 3rd Floor, Building A, No. 40, Jingfu West Road, Yangkengtang, Dalang Town, Dongguan City, Guangdong Province	
Model/Type reference :	UV SpotLight System	
Ratings :	Input:AC 100-240V Output:DC 5V/1A	
Responsible Testing Laboratory (as applicable), testing procedure and testing location(s):		
<input checked="" type="checkbox"/> Testing Laboratory:	Dongguan Funas Testing Technology Co.,Ltd.	
Testing location/ address :	Room 105 Floor Bao hao Technology Building 1 NO.15 Gong ye West Road Hi-Tech Industrial, Song shan lake Dongguan	
Tested by (name, function, signature) :	Duke Qian	
Approved by (name, function, signature) ... :	Wade Huang	 
<input type="checkbox"/> Testing procedure: CTF Stage 1:		
Testing location/ address :		
Tested by (name, function, signature) :		
Approved by (name, function, signature) ... :		
<input type="checkbox"/> Testing procedure: CTF Stage 2:		
Testing location/ address :		
Tested by (name + signature) :		
Witnessed by (name, function, signature) .. :		
Approved by (name, function, signature) ... :		

**List of Attachments (including a total number of pages in each attachment):**

Attachment No. 1: Photo documentation (41 pages)

Summary of testing:**Tests performed (name of test and test clause):**

IEC 60598-1:2014
IEC 60598-1:2014/AMD1:2017
IEC 60598-2-5:2015
EN 60598-2-5:2015
EN 60598-1:2015+A1:2018
The submitted samples were found to comply with the requirements of above test specification.

Testing location:

Dongguan Funas Testing Technology Co.,Ltd.
Room 105 Floor Bao hao Technology Building 1
NO.15 Gong ye West Road Hi-Tech Industrial,
Song shan lake Dongguan

Summary of compliance with National Differences (List of countries addressed):

-European Group difference

The product fulfils the requirements of EN 60598-2-5:2015; EN 60598-1:2015+A1:2018 (insert standard number and edition and delete the text in parenthesis, leave it blank or delete the whole sentence, if not applicable)

Use of uncertainty of measurement for decisions on conformity (decision rule) :

No decision rule is specified by the IEC standard, when comparing the measurement result with the applicable limit according to the specification in that standard. The decisions on conformity are made without applying the measurement uncertainty ("simple acceptance" decision rule, previously known as "accuracy method").

Other:... (to be specified, for example when required by the standard or client, or if national accreditation requirements apply)

Information on uncertainty of measurement:

The uncertainties of measurement are calculated by the laboratory based on application of criteria given by OD-5014 for test equipment and application of test methods, decision sheets and operational procedures of IECEE.

IEC Guide 115 provides guidance on the application of measurement uncertainty principles and applying the decision rule when reporting test results within IECEE scheme, noting that the reporting of the measurement uncertainty for measurements is not necessary unless required by the test standard or customer.

Calculations leading to the reported values are on file with the NCB and testing laboratory that conducted the testing.

**Copy of marking plate:**

The artwork below may be only a draft. The use of certification marks on a product must be authorized by the respective NCBs that own these marks.

According to the EU directives which have been aligned with EU NLF (new legislative framework), both of manufacturer and importer's name and address shall be affixed on the product or, where that is not possible, on its packaging or in a document accompanying the product before the product is placed on the EU market.

Fixed on metal enclosure outside (size: 65x50mm)

Labels for other models are same as above, only model no. and rated power are different

Remark: Height of CE mark at least 5mm, height of WEEE mark at least 7mm, height of letters and numerals at least 2mm.



Test item particulars :	Floodlights
Classification of installation and use :	Fixed and for indoor or outdoor use
Supply Connection :	Supply cord without plug
Possible test case verdicts:	
- test case does not apply to the test object..... :	N/A
- test object does meet the requirement..... :	P (Pass)
- test object does not meet the requirement..... :	F (Fail)
Testing :	
Date of receipt of test item :	Nov 13, 2023
Date (s) of performance of tests :	Nov 13, 2023 ~ Nov 16, 2023
General remarks:	
"(See Enclosure #)" refers to additional information appended to the report. "(See appended table)" refers to a table appended to the report.	
Throughout this report a <input type="checkbox"/> comma / <input type="checkbox"/> point is used as the decimal separator.	
Clause numbers between brackets refer to clauses in IEC 60598-1	
Manufacturer's Declaration per sub-clause 4.2.5 of IEC 02:	
Name and address of factory (ies) :	Same as applicant
General product information and other remarks:	
The manufacturer/ Importer has to ensure the appliance placing on the EU market conforms to the applicable EU directives which provide the affixing of the CE marking, such as LVD, EMC, RoHS, ErP, and so on. This report is also to be used as CE_LVD test report with number: 68.140.21.0180.01	
- LED SPOT Light for indoor or outdoor use. - Maximum Mounting height: 100 m. - One LED driver connects to respective LED modules separated from other LED modules.	



5.2 (0)	GENERAL TEST REQUIREMENTS		P
5.2 (0.3)	More sections applicable..... :	Yes <input type="checkbox"/> No <input checked="" type="checkbox"/>	—
5.2 (0.5)	Components	(see Annex 1)	—
5.2 (0.7)	Information for luminaire design in light sources standards		—
5.2 (0.7.2)	Light source safety standard	IEC/EN IEC 62031	—
	Luminaire design in the light source safety standard		—

5.4 (2)	CLASSIFICATION OF LUMINAIRES		P
5.4 (2.2)	Type of protection	Class I	P
5.4 (2.3)	Degree of protection..... :	IP66	P
5.4 (2.4)	Luminaire suitable for direct mounting on normally flammable surfaces..... :	Yes <input type="checkbox"/> No <input checked="" type="checkbox"/>	—
5.4 (2.5)	Luminaire for normal use	Yes <input checked="" type="checkbox"/> No <input type="checkbox"/>	—
	Luminaire for rough service	Yes <input type="checkbox"/> No <input checked="" type="checkbox"/>	—

5.5 (3)	MARKING		P
5.5 (3.2)	Mandatory markings		P
	Position of the marking		P
	Format of symbols/text		P
5.5 (3.3)	Additional information		P
	Language of instructions	ENGLISH	P
5.5 (3.3.1)	Combination luminaires		N/A
5.5 (3.3.2)	Nominal frequency in Hz	50/60Hz	P
5.5 (3.3.3)	Operating temperature		N/A
5.5 (3.3.5)	Wiring diagram		N/A
5.5 (3.3.6)	Special conditions		N/A
5.5 (3.3.7)	Metal halide lamp luminaire – warning		N/A
5.5 (3.3.8)	Limitation for semi-luminaires		N/A
5.5 (3.3.9)	Power factor and supply current		N/A
5.5 (3.3.10)	Suitability for use indoors		P
5.5 (3.3.11)	Luminaires with remote control		N/A
5.5 (3.3.12)	Clip-mounted luminaire – warning		N/A
5.5 (3.3.13)	Specifications of protective shields		N/A
5.5 (3.3.14)	Symbol for nature of supply	~	P
5.5 (3.3.15)	Rated current of socket outlet		N/A



5.5 (3.3.16)	Rough service luminaire		N/A
5.5 (3.3.17)	Mounting instruction for type Y, type Z and some type X attachments	Type Y	P
5.5 (3.3.18)	Non-ordinary luminaires with PVC cable		N/A
5.5 (3.3.19)	Protective conductor current in instruction if applicable		N/A
5.5 (3.3.20)	Provided with information if not intended to be mounted within arm's reach		N/A
5.5 (3.3.21)	Non replaceable and non-user replaceable light sources information provided	Non-user replaceable light sources	P
5.5 (3.3.22)	Controllable luminaires, classification of insulation provided		N/A
5.5 (3.3.23)	Luminaires without control gear provided with necessary information for selection of appropriate component		N/A
5.5 (3.3.24)	If not supplied with terminal block, information on the packaging		P
5.5 (3.3.25)	Luminaires employing light sources emitting UV on mains wiring, information provided		N/A
5.5 (3.3.26)	Wall mounted luminaire using external flexible cable or cord longer than 0.3 m, information provided		N/A
5.5 (3.4)	Test with water		P
	Test with hexane		P
	Legible after test		P
	Label attached		P
5.5 (-)	Additional information if applicable		P
	a) Operation position		N/A
	b) Weight and dimensions		P
	c) Maximum protected area		P
	d) Limitation of use indoors and/or outdoor	For indoor or outdoor use	P
	e) Maximum mounting height if ≤ 5 m		N/A

5.6 (4)	CONSTRUCTION		P
5.6 (4.2)	Components replaceable without difficulty		P
5.6 (4.3)	Wireways smooth and free from sharp edges		P
5.6 (4.4)	Lampholders		N/A
5.6 (4.4.1)	Integral lampholder		N/A
5.6 (4.4.2)	Wiring connection		N/A
5.6 (4.4.3)	Lampholder for end-to-end mounting		N/A



5.6 (4.4.4)	Positioning		N/A
	- pressure test (N)		—
	After test the lampholder comply with relevant standard sheets and show no damage		N/A
	After test on single-capped lampholder the lampholder have not moved from its position and show no permanent deformation		N/A
	- bending test (N)		—
	After test the lampholder have not moved from its position and show no permanent deformation		N/A
5.6 (4.4.5)	Peak pulse voltage		N/A
5.6 (4.4.6)	Centre contact		N/A
5.6 (4.4.7)	Parts in rough service luminaires resistant to tracking		N/A
5.6 (4.4.8)	Lamp connectors		N/A
5.6 (4.4.9)	Caps and bases correctly used		N/A
5.6 (4.4.10)	Light source for lampholder or connection according IEC 60061 not connected another way		N/A
5.6 (4.5)	Starter holders		N/A
	Starter holder in luminaires other than class II		N/A
	Starter holder class II construction		N/A
5.6 (4.6)	Terminal blocks		N/A
	Tails		N/A
	Unsecured blocks		N/A
5.6 (4.7)	Terminals and supply connections		P
5.6 (4.7.1)	Contact to metal parts		P
5.6 (4.7.2)	Test 8 mm live conductor		P
	Test 8 mm earth conductor		P
5.6 (4.7.3)	Terminals for supply conductors		P
5.6 (4.7.3.1)	Welded method and material		N/A
	- stranded or solid conductor		N/A
	- spot welding		N/A
	- welding between wires		N/A
	- Type Z attachment		N/A
	- mechanical test according to 15.6.2		N/A
	- electrical test according to 15.6.3		N/A
	- heat test according to 15.6.3.2.3 and 15.6.3.2.4		N/A
5.6 (4.7.4)	Terminals other than supply connection		P



5.6 (4.7.5)	Heat-resistant wiring/sleeves		N/A
5.6 (4.7.6)	Multi-pole plug		N/A
	- test at 30 N		N/A
5.6 (4.8)	Switches		N/A
	- adequate rating		N/A
	- adequate fixing		N/A
	- polarized supply		N/A
	- compliance with IEC 61058-1 for electronic switches		N/A
5.6 (4.9)	Insulating lining and sleeves		N/A
5.6 (4.9.1)	Retainment		N/A
	Method of fixing.....:		N/A
5.6 (4.9.2)	Insulated linings and sleeves:		N/A
	Resistant to a temperature > 20 °C to the wire temperature or		N/A
	a) & c) Insulation resistance and electric strength		N/A
	b) Ageing test. Temperature (°C).....:		N/A
5.6 (4.10)	Double or reinforced insulation		N/A
5.6 (4.10.1)	No contact, mounting surface – accessible metal parts – wiring of basic insulation		N/A
	Safe installation fixed luminaires		N/A
	Capacitors and switches		N/A
5.6 (4.10.2)	Assembly gaps:		N/A
	- not coincidental		N/A
	- no straight access with test probe		N/A
5.6 (4.10.3)	Retainment of insulation:		N/A
	- fixed		N/A
	- unable to be replaced; luminaire inoperative		N/A
	- sleeves retained in position		N/A
	- lining in lampholder		N/A
5.6 (4.10.4)	Protective impedance device		N/A
	Basic and supplementary insulation bridged by resistor(s) or appropriate capacitor		N/A
	Double or reinforced insulation bridged by appropriate and at least two resistors or two Y2 capacitors or one Y1 capacitor		N/A
	Capacitors comply with IEC 60384-14		N/A



	Resistors comply with test (a) in 14.1 of IEC 60065		N/A
5.6 (4.11)	Electrical connections and current-carrying parts		P
5.6 (4.11.1)	Contact pressure		P
5.6 (4.11.2)	Screws:		N/A
	- self-tapping screws		N/A
	- thread-cutting screws		N/A
5.6 (4.11.3)	Screw locking:		N/A
	- spring washer		N/A
	- rivets		N/A
5.6 (4.11.4)	Material of current-carrying parts		P
5.6 (4.11.5)	No contact to wood or mounting surface		P
5.6 (4.11.6)	Electro-mechanical contact systems		N/A
5.6 (4.12)	Screws and connections (mechanical) and glands		P
5.6 (4.12.1)	Screws not made of soft metal		P
	Screws of insulating material		P
	Torque test: torque (Nm); part..... :	Screw for fixing LED cover; 0.5Nm; Screw for fixing LED module; 0.5Nm	P
	Torque test: torque (Nm); part..... :	Screw for fixing LED driver; 1.2Nm; Screw for fixing junction box; 1.2Nm	P
	Torque test: torque (Nm); part..... :	Screw for fixing metal enclosure; 8.0Nm	P
5.6 (4.12.2)	Screws with diameter < 3 mm screwed into metal		N/A
5.6 (4.12.4)	Locked connections:		N/A
	- fixed arms; torque (Nm)..... :		N/A
	- lampholder; torque (Nm)..... :		N/A
	- push-button switches; torque 0,8 Nm..... :		N/A
5.6 (4.12.5)	Screwed glands; force (Nm)..... :	Metal gland: 6.25Nm; Plastic gland: 3.25Nm	P
5.6 (4.13)	Mechanical strength		P
5.6 (4.13.1)	Impact tests:		P
	- fragile parts; energy (Nm)..... :	LED cover; 0.5Nm	P
	- other parts; energy (Nm)..... :	Metal enclosure; plastic enclosure of waterproof junction box; 0.7Nm	P
	1) live parts		P
	2) linings		N/A



	3) protection		P
	4) covers		P
5.6 (4.13.2)	Metal parts have adequate mechanical strength		P
5.6 (4.13.3)	Straight test finger		P
5.6 (4.13.4)	Rough service luminaires		N/A
	- IP54 or higher		N/A
	a) fixed		N/A
	b) hand-held		N/A
	c) delivered with a stand		N/A
	d) for temporary installations and suitable for mounting on a stand		N/A
5.6 (4.13.6)	Tumbling barrel		N/A
5.6 (4.14)	Suspensions, fixings and means of adjusting		P
5.6 (4.14.1)	Mechanical load:		P
	A) four times the weight		P
	B) torque 2,5 Nm		P
	C) bracket arm; bending moment (Nm)..... :		N/A
	D) load track- mounted luminaires		N/A
	E) clip-mounted luminaires, glass-shelve. Thickness (mm)		N/A
	Metal rod. diameter (mm)		N/A
	Fixed luminaire or independent control gear without fixing devices		N/A
5.6 (4.14.2)	Load to flexible cables		N/A
	Mass (kg)		—
	Stress in conductors (N/mm ²)		N/A
	Mass (kg) of semi-luminaire		N/A
	Bending moment (Nm) of semi-luminaire		N/A
5.6 (4.14.3)	Adjusting devices:		P
	- flexing test; number of cycles..... :	45 cycles	P
	- strands broken..... :	0	P
	- electric strength test afterwards		P
5.6 (4.14.4)	Telescopic tubes: cords not fixed to tube; no strain on conductors		N/A
5.6 (4.14.5)	Guide pulleys		N/A
5.6 (4.14.6)	Strain on socket-outlets		N/A
5.6 (4.15)	Flammable materials		N/A



	- glow-wire test 650°C..... :	See Test Table 5.15 (13.3.2)	N/A
	- spacing ≥30 mm		N/A
	- screen withstanding test of 13.3.1		N/A
	- screen dimensions		N/A
	- no fiercely burning material		N/A
	- thermal protection		N/A
	- electronic circuits exempted		N/A
5.6 (4.15.2)	Luminaires made of thermoplastic material with lamp control gear		N/A
	a) construction		N/A
	b) temperature sensing control		N/A
	c) surface temperature		N/A
5.6 (4.16)	Luminaires for mounting on normally flammable surfaces		N/A
	No lamp control gear..... :	Electronic control gears are exempt from the requirements of this clause	N/A
	Provided with adaptor for a track meet the requirements for direct mounting on normally flammable surfaces		N/A
5.6 (4.16.1)	Lamp control gear spacing:		N/A
	- spacing 35 mm		N/A
	- spacing 10 mm		N/A
5.6 (4.16.2)	Thermal protection:		N/A
	- in lamp control gear		N/A
	- external		N/A
	- fixed position		N/A
	- temperature marked lamp control gear		N/A
5.6 (4.16.3)	Design to satisfy the test of 12.6	(see clause 12.6)	N/A
5.6 (4.17)	Drain holes		N/A
	Clearance at least 5 mm		N/A
5.6 (4.18)	Resistance to corrosion		P
5.6 (4.18.1)	- rust-resistance		N/A
5.6 (4.18.2)	- season cracking in copper		N/A
5.6 (4.18.3)	- corrosion of aluminium		P
5.6 (4.19)	Ignitors compatible with ballast		N/A
5.6 (4.20)	Rough service vibration		N/A
5.6 (4.21)	Protective shield		N/A



5.6 (4.21.1)	Shield fitted if tungsten halogen lamps or metal halide lamps		N/A
	Shield of glass if tungsten halogen lamps		N/A
5.6 (4.21.2)	Particles from a shattering lamp not impair safety		N/A
5.6 (4.21.3)	No direct path		N/A
5.6 (4.21.4)	Impact test on shield		N/A
	Glow-wire test on lamp compartment.....:	See Test Table 5.15 (13.3.2)	N/A
5.6 (4.22)	Attachments to lamps not cause overheating or damage		N/A
5.6 (4.23)	Semi-luminaires comply Class II		N/A
5.6 (4.24)	Photobiological hazards		P
5.6 (4.24.1)	No excessive UV radiation if tungsten halogen lamps and metal halide lamps (Annex P)	RG1	P
5.6 (4.24.2)	Retinal blue light hazard		N/A
	Class of risk group assessed according to IEC/TR 62778		—
	Luminaires with E_{thr} :		N/A
	a) Fixed luminaires		N/A
	- distance x m, borderline between RG1 and RG2... :		N/A
	- marking and instruction according 3.2.23		N/A
	b) Portable and handheld luminaires		N/A
	- marking according 3.2.23 if RG1 exceeded at 200 mm according to IEC/TR 62778		N/A
	Portable luminaires for children IEC 60598-2-10 and Mains socket outlet nightlights IEC 60598-2-12 not exceed RG1 at 200 mm according to IEC/62778		N/A
5.6 (4.25)	Mechanical hazard		P
	No sharp point or edges		P
5.6 (4.26)	Short-circuit protection		N/A
5.6 (4.26.1)	Adequate means of uninsulated accessible SELV parts		N/A
5.6 (4.26.2)	Short-circuit test with test chain according 4.26.3		N/A
	Supply source ES1 PSE		N/A
	Test chain not melt through		N/A
	Test sample not exceed values of Table 12.1 and 12.2		N/A
5.6 (4.27)	Terminal blocks with integrated screwless earthing contacts		N/A
	Test according Annex V		N/A



	Pull test of terminal fixing (20 N)		N/A
	After test, resistance < 0,05 Ω		N/A
	Pull test of mechanical connection (50 N)		N/A
	After test, resistance < 0,05 Ω		N/A
	Voltage drop test, resistance < 0,05 Ω		N/A
5.6 (4.28)	Fixing of thermal sensing control		N/A
	Not plug-in or easily replaceable type		N/A
	Reliably kept in position		N/A
	No adhesive fixing if UV radiations from a lamp can degrade the fixing		N/A
	Not outside the luminaire enclosure		N/A
	Test of adhesive fixing:		N/A
	Max. temperature on adhesive material (°C)		—
	100 cycles between t min and t max		N/A
	Temperature sensing control still in position		N/A
5.6 (4.29)	Luminaires with non-replaceable light source		N/A
	Not possible to replace light source		N/A
	Live part not accessible after parts have been opened by hand or tools		N/A
5.6 (4.30)	Luminaires with non-user replaceable light source		N/A
	If protective cover provide protection against electric shock and marked with “caution, electric shock risk” symbol:		N/A
	At least one fixing means requiring use of tool		N/A
5.6 (4.31)	Insulation between circuits		P
	Circuits insulated from LV supply fulfil requirements according 4.31.1 – 4.31.3		P
	Controllable luminaires requiring same level of insulation for all components, the insulation between control terminals and LV supply fulfil requirements according 4.31.1 – 4.31.3		N/A
5.6 (4.31.1)	SELV or PELV circuits		P
	Used SELV/PELV source		P
	Voltage ≤ ELV		P
	Insulating of SELV/PELV circuits from LV supply		P
	Insulating of SELV/PELV circuits from other non SELV/PELV circuits		P
	Insulating of SELV/PELV circuits from FELV		N/A



	Insulating of SELV/PELV circuits from other SELV/PELV circuits		P
	SELV/PELV circuits insulated from accessible parts according Table X.1		P
	Plugs not able to make any electrical contact with socket-outlets of other voltage systems		N/A
	Socket outlets does not admit plugs of other voltage systems		N/A
	Plugs and socket-outlets does not have protective conductor contact		N/A
5.6 (4.31.2)	FELV circuits		N/A
	Used FELV source		N/A
	Voltage \leq ELV		N/A
	Insulating of FELV circuits from LV supply		N/A
	FELV circuits insulated from accessible parts according Table X.1		N/A
	Plugs not able to make any electrical contact with socket-outlets of other voltage systems		N/A
	Socket outlets does not admit plugs of other voltage systems		N/A
	Socket-outlets does not have protective conductor contact		N/A
5.6 (4.31.3)	Other circuits		N/A
	Other circuits insulated from accessible parts according Table X.1		N/A
	Class II construction with equipotential bonding for protection against indirect contacts with live parts:		N/A
	- conductive parts are connected together		N/A
	- test according 7.2.3		N/A
	- conductive part not cause an electric shock in case of an insulation fault		N/A
	- equipotential bonding in master/slave applications		N/A
	- master luminaire provided with terminal for accessible conductive parts of slave luminaires		N/A
	- slave luminaire constructed as class I		N/A
5.6 (4.32)	Overvoltage protective devices		N/A
	Comply with IEC 61643-11		N/A
	External to controlgear and connected to earth:		N/A
	- only in fixed luminaires		N/A
	- only connected to protective earth		N/A



5.6 (4.33)	Luminaire powered via information technology communication cabling		N/A
	Requirements for Class III luminaire		N/A
	Rated voltage within the range of ES1 and does not exceed maximum voltage of used connector		N/A
	Luminaire does not create any hazard from overvoltage	(see Annex 2)	N/A
5.6 (4.34)	Electromagnetic fields (EMF)		N/A
	No harmful electromagnetic fields		N/A
5.6 (4.35)	Protection against moving fan blades		N/A
	Test with a standard test finger		N/A
	Test with test probe acc. to Figure 13 (IEC 61032) for portable luminaire		N/A
	Blades rounded with radius ≥ 0.5 mm and:		N/A
	-hardness less than D60 Shore		N/A
	-peripheral speed less than 15 m/s		N/A
	-input power of fan ≤ 2 W at rated voltage		N/A
5.6 (4.36)	Track-mounted luminaires		P
	Test in accordance with Annex A of IEC60570:2003/AMD2:2019		N/A
5.6.1 (-)	At least IPX3 if for outdoor use	IP66	P
5.6.2 (-)	Lampholder brackets and lamp supports		N/A
5.6.3 (-)	Adjusting means		N/A
5.6.4 (-)	Controlling components		N/A
5.6.5 (-)	Fixing device		P
	Wind force test		P
5.6.6 (-)	Locking of angular adjustment		P
5.6.7 (-)	Vibration resistance		P
5.6.8 (-)	Requirement on glass cover if mounting height > 5 m		N/A
	Method of protection		—

5.7 (11)	CREEPAGE DISTANCES AND CLEARANCES		P
5.7 (11.2)	Creepage distances and clearances..... :	See Table 5.7 (11.2)	P
	Impulse withstand category (Normal category II) (Category III Annex U, Table U.1)	Category II <input checked="" type="checkbox"/> Category III <input type="checkbox"/>	—
	Protected against pollution, reduced creepage and clearance according Annex P of IEC 61347-1		N/A
5.7 (11.2.2)	Creepage distances for frequency up to 30 kHz	See Test Table 5.7 (11.2) I	P



	Creepage distances for frequency over 30 kHz:		N/AP
	- Controlgear marked with \hat{U}_{OUT} and f_{UOUT} according IEC 61347-1, clause 7.1, item w	See Test Table 5.7 (11.2) II	N/A
	- Requirements according IEC 60664-4 for controlgear not covered by IEC 61347	See Test Table 5.7 (11.2) II	N/A
5.7 (11.2.3)	Clearances for frequency up to 30 kHz	See Test Table 5.7 (11.2) I	P
	Clearances distances for frequency over 30 kHz:		N/A
	- Controlgear marked with U_P	See Test Table 5.7 (11.2) II	N/A
	- Requirements according IEC 60664-4 for controlgear not covered by IEC 61347	See Test Table 5.7 (11.2) II	N/A

5.8 (7)	PROVISION FOR EARTHING		P
5.8 (7.2.1 + 7.2.3)	Accessible metal parts		P
	Metal parts in contact with supporting surface		P
	Resistance < 0,5 Ω: Max. 0.114 Ω		P
	Self-tapping screws used		P
	Thread-forming screws		N/A
	Thread-forming screw used in a groove		N/A
	Protective earth makes contact first		P
	Terminal blocks with integrated screwless protective earthing contacts tested according Annex V		N/A
	Protective earthing of the luminaire not via built-in control gear		P
5.8 (7.2.2 + 7.2.3)	Protective earth continuity in joints, etc.		P
5.8 (7.2.4)	Locking of clamping means		P
	Compliance with 4.7.3		P
5.8 (7.2.5)	Protective earth terminal integral part of connector socket		N/A
5.8 (7.2.6)	Protective earth terminal adjacent to mains terminals		N/A
5.8 (7.2.7)	Electrolytic corrosion of the protective earth terminal		P
5.8 (7.2.8)	Material of protective earth terminal		P
	Contact surface bare metal		P
5.8 (7.2.10)	Class II luminaire for looping-in		N/A
	Double or reinforced insulation to functional earth		N/A
5.8 (7.2.11)	Protective earthing core coloured green-yellow		P
	Length of earth conductor		P



5.8 (7.2.12)	PELV circuit connected to protective earth for functional purpose		N/A
--------------	---	--	-----

5.9 (14)	SCREW TERMINALS		
	Separately approved; component list	(see Annex 1)	
	Part of the luminaire	(see Annex 3)	

5.9 (15)	SCREWLESS TERMINALS AND ELECTRICAL CONNECTIONS		P
	Separately approved; component list.....:	(see Annex 1)	P
	Part of the luminaire.....:	(see Annex 4)	N/A

5.10 (5)	EXTERNAL AND INTERNAL WIRING		P
5.10 (5.2)	Supply connection and external wiring		P
5.10 (5.2.1)	Means of connection.....:	Supply cord without plug	P
	Outdoor luminaire has not PVC insulated external wiring if not Class III or SELV/PELV circuits ≤ 25 V AC/60 V DC/25 V peak interrupted DC voltage with frequency 10Hz -200 Hz or protected from outdoor environment		N/A
5.10 (5.2.2)	Type of cable.....:	H07RN-F	P
	Nominal cross-sectional area (mm²).....:	3x2.5mm²	P
	Cables equal to IEC 60227 or IEC 60245	IEC 60245	P
5.10 (5.2.3)	Type of attachment, X, Y or Z	Type Y	P
5.10 (5.2.5)	Type Z not connected to screws		N/A
5.10 (5.2.6)	Cable entries:		P
	- suitable for introduction		P
	- adequate degree of protection		P
5.10 (5.2.7)	Cable entries through rigid material have rounded edges		P
5.10 (5.2.8)	Insulating bushings:		N/A
	- suitably fixed		N/A
	- material in bushings		N/A
	- material not likely to deteriorate		N/A
	- tubes or guards made of insulating material		N/A
5.10 (5.2.9)	Locking of screwed bushings		N/A
5.10 (5.2.10)	Cord anchorage:		P
	- covering protected from abrasion		P



	- clear how to be effective		P
	- no mechanical or thermal stress		P
	- no tying of cables into knots etc.		P
	- insulating material or lining		P
5.10 (5.2.10.1)	Cord anchorage for type X attachment:		N/A
	a) at least one part fixed		N/A
	b) types of cable		N/A
	c) no damaging of the cable		N/A
	d) whole cable can be mounted		N/A
	e) no touching of clamping screws		N/A
	f) metal screw not directly on cable		N/A
	g) replacement without special tool		N/A
	Glands not used as anchorage		N/A
	Labyrinth type anchorages		N/A
5.10 (5.2.10.2)	Adequate cord anchorage for type Y and type Z attachment	Type Y	P
5.10 (5.2.10.3)	Tests:		P
	- impossible to push cable; unsafe		P
	- pull test: 25 times; pull (N)..... :	120N for supply cord; 80N for output cord of junction box	P
	- torque test: torque (Nm)..... :	0.35Nm for supply cord and output cord of junction box	P
	- displacement ≤ 2 mm		P
	- no movement of conductors		P
	- no damage of cable or cord		P
	- function independent of electrical connection		P
5.10 (5.2.10.4)	Luminaire with/designed for use with supply cord with maximum current of 2A:		N/A
	- Ordinary Class III luminaire supplied with SELV $\leq 25V$ RMS/60V DC		N/A
	- Ordinary Class III luminaire supplied with PELV $\leq 12V$ RMS/30V DC		N/A
	- Other than ordinary Class III luminaire supplied with voltage $\leq 12V$ RMS/30V DC		N/A
	Pull test of 30N		N/A
5.10 (5.2.11)	External wiring passing into luminaire		P



5.10 (5.2.12)	Looping-in terminals		N/A
5.10 (5.2.13)	Wire ends not tinned		P
	Wire ends tinned: no cold flow		N/A
5.10 (5.2.14)	Mains plug same protection		N/A
	Class III luminaire plug		N/A
	No unsafe compatibility		N/A
5.10 (5.2.15)	Connectors for Class III luminaires (IEC 60603 or IEC 62680)		N/A
5.10 (5.2.16)	Appliance inlets (IEC 60320)		N/A
	Installation couplers (IEC 61535)		N/A
	Appliance inlet or connector systems (IEC 61984)		N/A
5.10 (5.2.17)	No standardized interconnecting cables properly assembled		N/A
5.10 (5.2.18)	Used plug in accordance with		N/A
	- IEC 60083		N/A
	- other standard		N/A
5.10 (5.3)	Internal wiring		P
5.10 (5.3.1)	Internal wiring of suitable size and type		P
	Through wiring		N/A
	- not delivered/ mounting instruction		N/A
	- factory assembled		N/A
	- socket outlet loaded (A)..... :		N/A
	- temperatures..... : (see Annex 2)		N/A
	Green- yellow for protective earth only		P
5.10 (5.3.1.1)	Internal wiring connected directly to fixed wiring		P
	Cross-sectional area (mm ²)..... : 2.5mm ²		P
	Insulation thickness		P
	Extra insulation added where necessary		
5.10 (5.3.1.2)	Internal wiring connected to fixed wiring via internal current-limiting device		P
	Cross-sectional area (mm ²)..... :		P
5.10 (5.3.1.3)	Double or reinforced insulation for class II		N/A



5.10 (5.3.1.4)	Conductors without insulation		N/A
5.10 (5.3.1.5)	SELV/PELV current-carrying parts		P
5.10 (5.3.1.6)	Insulation thickness other than PVC or rubber		N/A
5.10 (5.3.2)	Sharp edges etc.		P
	No moving parts of switches etc.		N/A
	Joints, raising/lowering devices		N/A
	Telescopic tubes etc.		N/A
	No twisting over 360°		P
5.10 (5.3.3)	Insulating bushings:		N/A
	- suitable fixed		N/A
	- material in bushings		N/A
	- material not likely to deteriorate		N/A
	- cables with protective sheath		N/A
5.10 (5.3.4)	Joints and junctions effectively insulated		N/A
5.10 (5.3.5)	Strain on internal wiring		P
5.10 (5.3.6)	Wire carriers		N/A
5.10 (5.3.7)	Wire ends not tinned		P
	Wire ends tinned: no cold flow		P
5.10 (5.4)	Test to determine suitability of conductors having a reduced cross-sectional area		N/A
	Under test the temperature of the luminaire wiring insulation not exceed the limits stated in Table 12.2	(see Annex 2)	N/A
	No damage to luminaire wiring after test		N/A

5.11 (8)	PROTECTION AGAINST ELECTRIC SHOCK		P
5.11 (8.2.1)	Live parts not accessible		P
	Basic insulated parts not used on the outer surface without appropriate protection		P
	Basic insulated parts not accessible with standard test finger on portable, settable and adjustable luminaires		P
	Basic insulated parts not accessible with Ø 50 mm probe from outside, other types of luminaires		N/A
	Lamp and starterholders in portable and adjustable luminaires comply with double or reinforced insulation requirements		N/A



	Basic insulation only accessible under lamp or starter replacement		N/A
	Protection in any position		N/A
	Double-ended tungsten filament lamp		P
	Insulation lacquer not reliable		N/A
	Double-ended high pressure discharge lamp		N/A
	Relevant warning according to 3.2.18 fitted to the luminaire		N/A
5.11 (8.2.2)	Portable luminaire adjusted in most unfavourable position		N/A
5.11 (8.2.3.a)	Class II luminaire:		N/A
	- basic insulated metal parts not accessible during starter or lamp replacement		N/A
	- basic insulation not accessible other than during starter or lamp replacement		N/A
	- glass protective shields not used as supplementary insulation		N/A
5.11 (8.2.3.b)	BC lamp holder of metal in class I luminaires shall be connected to protective earth		N/A
5.11 (8.2.3.c)	SELV circuits with exposed current carrying parts:		N/A
	Ordinary luminaire:		N/A
	- voltage under load/ no-load AC (V).....:		N/A
	- voltage under load/ no-load DC (V).....:		N/A
	- interrupted DC voltage (V)		N/A
	- touch current if applicable (mA)		N/A
	One conductive part insulated if required		N/A
	Other than ordinary luminaire:		N/A
	- voltage under load/ no-load AC (V).....:		N/A
	- voltage under load/ no-load DC (V).....:		N/A
	- interrupted DC voltage (V)		N/A
	Class III luminaire only for connection to SELV		N/A
	Class III luminaire not provided with means for protective earthing		N/A
5.11 (8.2.3.d)	PELV circuits with exposed current carrying parts:		N/A
	Ordinary luminaire:		N/A
	- voltage under load/ no-load AC (V).....:		N/A



	- voltage under load/ no-load DC (V).....:		N/A
	Other than ordinary luminaire:		N/A
	- voltage under load/ no-load AC (V).....:		N/A
	- voltage under load/ no-load DC (V).....:		N/A
	One pole insulated if required		N/A
5.11 (8.2.4)	Portable luminaire have protection independent of supporting surface		N/A
5.11 (8.2.5)	Compliance with the standard test finger or relevant probe		P
5.11 (8.2.6)	Covers reliably secured		P
5.11 (8.2.7)	Luminaire other than below with capacitor > 0,5 μF not exceed 50 V 1 min after disconnection		P
	Portable luminaire with capacitor > 0,1 μF (0.25) not exceed 34 V 1 s after disconnection		N/A
	Other luminaires with capacitor > 0,1 μF (0.25) with plug and track adaptors not exceed 60 V 5 s after disconnection		N/A

5.12 (12)	ENDURANCE TEST AND THERMAL TEST		P
5.12 (-)	If IP > IP 20 relevant test of (12.4), (12.5), (12.6) and (12.7) after (9.2) before (9.3) as specified in 5.13		—
5.12 (12.2)	Selection of lamps and ballasts		—
	Lamp used according Annex B	(Lamp used see Annex 2)	—
	Control gear if separate and not supplied	(Control gear used see Annex 2)	—
5.12 (12.3)	Endurance test:		P
	a) mounting- position	As normal used	—
	b) test temperature (°C).....:	50	—
	c) total duration (h)	240	—
	d) supply voltage (V).....:	264	—
	d) if not equipped with control gear, constant voltage/current (V) or (A)	--	—
5.12 (12.3.1d)	d) Class III luminaires powered via information technology communication cable:		N/A
	- voltage under normal operation (V).....:		—
	- voltage under abnormal operation (V).....:		—
	e) luminaire ceases to operate		—
	f) luminaire with constant light output function		N/A



5.12 (12.3.2)	After endurance test:		P
	- no part unserviceable		P
	- luminaire not unsafe		P
	- no damage to track system		N/A
	- marking legible		P
	- no cracks, deformation etc.		N/A
5.12 (12.4)	Thermal test (normal operation)	(see Annex 2)	N/A
5.12 (12.5)	Thermal test (abnormal operation)	(see Annex 2)	N/A
5.12 (12.6)	Thermal test (failed lamp control gear condition):		N/A
5.12 (12.6.1)	Through wiring or looping-in wiring loaded by a current of (A)		—
	- case of abnormal conditions.....		—
	- electronic lamp control gear		N/A
	- measured winding temperature (°C): at 1,1 Un		—
	- measured mounting surface temperature (°C) at 1,1 Un.....		N/A
	- calculated mounting surface temperature (°C)		N/A
	- track-mounted luminaires		N/A
5.12 (12.6.2)	Temperature sensing control		N/A
	- case of abnormal conditions.....		—
	- thermal link		N/A
	- manual reset cut-out		N/A
	- auto reset cut-out		N/A
	- measured mounting surface temperature (°C).....		N/A
	- track-mounted luminaires		N/A
5.12 (12.7)	Thermal test (failed lamp control gear in plastic luminaires):		N/A
5.12 (12.7.1)	Luminaire without temperature sensing control		N/A
5.12 (12.7.1.1)	Luminaire with fluorescent lamp ≤ 70W		N/A
	Test method 12.7.1.1 or Annex W		—
	Test according to 12.7.1.1:		N/A
	- case of abnormal conditions.....		—
	- Ballast failure at supply voltage (V)		—
	- Components retained in place after the test		N/A



	- Test with standard test finger after the test		N/A
	Test according to Annex W:		N/A
	- case of abnormal conditions.....:		—
	- measured winding temperature (°C): at 1,1 Un.....:		—
	- measured temperature of fixing point/exposed part (°C): at 1,1 Un.....:		—
	- calculated temperature of fixing point/exposed part (°C).....:		—
	Ball-pressure test.....:	See Table 5.15 (13.2.1)	N/A
5.12 (12.7.1.2)	Luminaire with discharge lamp, fluorescent lamp > 70W, transformer > 10 VA		N/A
	- case of abnormal conditions.....:		—
	- measured winding temperature (°C): at 1,1 Un.....:		—
	- measured temperature of fixing point/exposed part (°C): at 1,1 Un.....:		—
	- calculated temperature of fixing point/exposed part (°C).....:		—
	Ball-pressure test.....:	See Table 5.15 (13.2.1)	N/A
5.12 (12.7.1.3)	Luminaire with short circuit proof transformers ≤ 10 VA		N/A
	- case of abnormal conditions.....:		—
	- Components retained in place after the test		N/A
	- Test with standard test finger after the test		N/A
5.12 (12.7.2)	Luminaire with temperature sensing control		N/A
	- thermal link.....:	Yes <input type="checkbox"/> No <input type="checkbox"/>	—
	- manual reset cut-out.....:	Yes <input type="checkbox"/> No <input type="checkbox"/>	—
	- auto reset cut-out.....:	Yes <input type="checkbox"/> No <input type="checkbox"/>	—
	- case of abnormal conditions.....:		—
	- highest measured temperature of fixing point/ exposed part (°C):.....:		—
	Ball-pressure test.....:	See Table 5.15 (13.2.1)	N/A
5.12.1 (-)	Reduction 10 °C of measured temperatures if for outdoor use		—
5.12.2 (-)	Glass covers used within the thermal limits		N/A
5.13 (9)	RESISTANCE TO DUST AND MOISTURE		P
5.13.1 (-)	If IP > IP 20 the order of tests as specified in clause 5.12		P



5.13 (9.2)	Tests for ingress of dust, solid objects and moisture:		P
	- classification according to IP..... :	IP66	—
	- mounting position during test..... :	As in normal use	—
	- fixing screws tightened; torque (Nm)..... :	2/3x0,5Nm for screw fixing LED cover	—
	- tests according to clauses..... :	9.2.2 and 9.2.7	—
	- electric strength test afterwards		P
	a) no deposit in dust-proof luminaire		N/A
	b) no talcum in dust-tight luminaire		P
	c) no trace of water on current-carrying parts or on insulation where it could become a hazard		P
	c.1) For luminaires without drain holes – no water entry		P
	c.2) For luminaires with drain holes – no hazardous water entry		N/A
	d) no water in watertight, pressure watertight, high pressure and temperature water jet-proof or high pressure and cold water jet-proof luminaire		N/A
	e) no contact with live parts (IP 2X)		N/A
	e) no entry into enclosure (IP 3X and IP 4X)		N/A
	e) no contact with live parts through drain holes and ventilation slots (IP3X and IP4X)		N/A
	f) no trace of water on part of lamp requiring protection from splashing water		N/A
	g) no damage of protective shield or glass envelope		N/A
5.13 (9.3)	Humidity test 48 h	25°C; R.H. 93%	P

5.14 (10)	INSULATION RESISTANCE AND ELECTRIC STRENGTH		P
5.14 (10.2.1)	Insulation resistance test		P
	Cable or cord covered by metal foil or replaced by a metal rod of mm Ø		—
	Insulation resistance (MΩ)..... :		—
	SELV/PELV:		P
	- between current-carrying parts of different polarity:		N/A
	- between current-carrying parts and mounting surface..... :	100MΩ (required: 1 MΩ)	P
	- between current-carrying parts and metal parts of the luminaire..... :	100MΩ (required: 1 MΩ)	P



	- between the outer surface of a flexible cord or cable where it is clamped in a cord anchorage and accessible metal parts..... :		N/A
	- Insulation bushings as described in Section 5		N/A
	Other than SELV/PELV:		P
	- between live parts of different polarity..... :	100MΩ (required: 2 MΩ)	P
	- between live parts and mounting surface..... :	100MΩ (required: 2 MΩ)	P
	- between live parts and metal parts..... :	Class I construction: 100MΩ (required: 2MΩ) Class II construction: 100MΩ (required: 4MΩ)	P
	- between live parts of different polarity through action of a switch..... :		N/A
	- between the outer surface of a flexible cord or cable where it is clamped in a cord anchorage and accessible metal parts..... :		N/A
	- Insulation bushings as described in Section 5		N/A
5.14 (10.2.2)	Electric strength test		P
	Dummy lamp		N/A
	Luminaires with ignitors after 24 h test	500V	P
	Luminaires with manual ignitors	500V	P
	Test voltage (V)..... :		N/A
	SELV/PELV:		P
	- between current-carrying parts of different polarity:	1480V	P
	- between current-carrying parts and mounting surface..... :	1480V	P
	- between current-carrying parts and metal parts of the luminaire..... :	Class I construction: 1480V; Class II construction: 2960V	P
	- between the outer surface of a flexible cord or cable where it is clamped in a cord anchorage and accessible metal parts..... :		N/A
	- Insulation bushings as described in Section 5		N/A
	Other than SELV/PELV:		N/A
	- between live parts of different polarity..... :		N/A
	- between live parts and mounting surface..... :		N/A
	- between live parts and metal parts..... :		N/A
	- between live parts of different polarity through action of a switch..... :		N/A



	- between the outer surface of a flexible cord or cable where it is clamped in a cord anchorage and accessible metal parts..... :		N/A
	- Insulation bushings as described in Section 5 :		N/A
5.14 (10.3)	Touch current (mA)..... :		P
	Protective conductor current (mA)..... :	Protective conductor current: 0.453mA (limit: 3.5mA); Touch current: 0.176mA (limit: 0.7mA)	P

5.15 (13)	RESISTANCE TO HEAT, FIRE AND TRACKING		N/A
5.15 (13.2.1)	Ball-pressure test..... :	See Test Table 5.15 (13.2.1)	N/A
5.15 (13.3.1)	Needle-flame test (10 s)..... :	See Test Table 5.15 (13.3.1)	N/A
5.15 (13.3.2)	Glow-wire test (650°C)..... :	See Test Table 5.15 (13.3.2)	P
5.15 (13.4)	Proof tracking test (IEC 60112)..... :	See Test Table 5.15 (13.4)	P



5.7 (11.2)	TABLE I: Creepage distances and clearances						P
	Minimum distances (mm) for a.c. up to 30 kHz sinusoidal voltages						P
	Applicable part of IEC 60598-1 Table 11.1.A*, 11.1.B* and 11.2*						P
	Insulation type **	Measured clearance	Required		Measured creepage	Required	
			clearance	*Table		creepage	*Table
Distance 1:	R	5.4	3.0	11.1.B	5.4	5.0	11.1.A
Distance 2:	R	7.8	3.0	11.1.B	7.8	5.0	11.1.A
Distance 3:	R	1.5	0.5	11.1.B	1.5	1.32	11.1.A
Working voltage (V)..... :					1-2 distance: 240V 3 distance: max. 80V		—
PTI..... :					< 600 <input checked="" type="checkbox"/> ≥ 600 <input type="checkbox"/>		—
Pulse voltage or U_P if applicable (kV)					--		—
Supplementary information:							
Distance 1: live parts on terminal block in junction box to junction box accessible							
Distance 2: live parts on terminal block in waterproof connector to waterproof connector accessible							
Distance 3: current carrying parts on LED modules to metal enclosure							
Distance 2:	--	--	--	--	--	--	--
Working voltage (V)..... :					--		—
PTI..... :					< 600 <input type="checkbox"/> ≥ 600 <input type="checkbox"/>		—
Pulse voltage or U_P if applicable (kV)					--		—
Supplementary information:--							
Distance 3:	--	--	--	--	--	--	--
Working voltage (V)..... :					--		—
PTI..... :					< 600 <input type="checkbox"/> ≥ 600 <input type="checkbox"/>		—
Pulse voltage or U_P if applicable (kV)					--		—
Supplementary information:--							

** Insulation type: B – Basic; S – Supplementary; R – Reinforced. See also IEC 60598-1 Annex M.



5.7 (11.2)	TABLE II: Creepage distances and clearances							N/A
Minimum distances (mm) for a.c. higher than 30 kHz sinusoidal voltages								
Applicable part of IEC 61347-1 Table 7 and 8* or IEC 60664-4 Table 1 and 2								
Distances	Insulation type **	Measured clearance	Required		Measured creepage	Required		
			clearance	*Table		creepage	*Table	
Distance 1:								
Working voltage (V)..... :							—	
Frequency if applicable (kHz)..... :							—	
PTI..... :			< 600 <input type="checkbox"/>		≥ 600 <input type="checkbox"/>		—	
Peak value of the working voltage \hat{U}_{out} if applicable (kV) :							—	
Supplementary information:								
Distance 2:								
Working voltage (V)..... :							—	
Frequency if applicable (kHz)..... :							—	
PTI..... :			< 600 <input type="checkbox"/>		≥ 600 <input type="checkbox"/>		—	
Peak value of the working voltage \hat{U}_{out} if applicable (kV) :							—	
Supplementary information:								
Distance 3:								
Working voltage (V)..... :							—	
Frequency if applicable (kHz)..... :							—	
PTI..... :			< 600 <input type="checkbox"/>		≥ 600 <input type="checkbox"/>		—	
Peak value of the working voltage \hat{U}_{out} if applicable (kV) :							—	
Supplementary information:								

** Insulation type: B – Basic; S – Supplementary; R – Reinforced.



5.15 (13.2.1)	TABLE: Ball Pressure Test of Thermoplastics				N/A
Allowed impression diameter (mm): 2					—
Object/ Part No./ Material		Manufacturer/ trademark	Test temperature (°C)		Impression diameter (mm)
Supplementary information:					

5.15 (13.3.1)	TABLE: Needle-flame test					N/A
Object/ Part No./ Material	Manufacturer/ trademark	Duration of application of test flame (ta); (s)	Ignition of specified layer Yes/No	Duration of burning (tb) (s)	Verdict	
Supplementary information:						

5.15 (13.3.2)	TABLE: Resistance to heat and fire - Glow wire tests						P
Object/ Part No./ Material	Manufacturer/ trademark	Glow wire test (°C)				Verdict	
		650		750			850
		te	ti	te	ti		
LED plastic cover	Teijin Chemicals Plastic Compounds Shanghai Ltd	0	0	--	--	--	PASS
Ignition of the specified layer placed underneath the test specimen (Yes/No).....:						Yes	
Supplementary information:--							

5.15 (13.4)	TABLE: Proof tracking test					P
Test voltage PTI: 175 V					—	
Object/ Part No./ Material		Manufacturer/ trademark	Withstand 50 drops without failure on three places or on three specimens			Verdict
LED plastic cover		Teijin Chemicals Plastic Compounds Shanghai Ltd	YES	YES	YES	PASS
Supplementary information:						
ANNEX 1	TABLE: Critical components information					



Object / part No.	Code	Manufacturer/ trademark	Type / model	Technical data	Standard	Mark(s) of conformity ¹⁾
Supply cord	B	Guangdong Rifeng Electrical Cable Co., Ltd.	H07RN-F	3 x 2.5mm ²	EN 50525-2-21	VDE
Alt	B	Guangdong Huasheng Electrical Appliances Co., Ltd.	H07RN-F	3 x 2.5mm ²	EN 50525-2-21	VDE
Output cord for junction box	B	Guangdong Rifeng Electrical Cable Co., Ltd.	H07RN-F	3 x 2.5mm ²	EN 50525-2-21	VDE
Alt	B	Guangdong Huasheng Electrical Appliances Co., Ltd.	H07RN-F	3 x 2.5mm ²	EN 50525-2-21	VDE
Input LED module wire	B	Guangdong Rifeng Electrical Cable Co., Ltd.	H07RN-F	3 x 2.5mm ²	EN 50525-2-21	VDE
Alt	B	Guangdong Huasheng Electrical Appliances Co., Ltd.	H07RN-F	3 x 2.5mm ²	EN 50525-2-21	VDE
Waterproof junction box	B	Zhongshan H.C.F. Electrical Component Factory CO., Ltd.	B707-4	450Vac; 0.5-2.5mm ² ; IP66; -5°C to 60°C	IEC/EN 60670-1/ - 22	TÜV SÜD B 097117 0003 Rev.00*
Terminal block in junction box	B	Jiang Men Krealux Electrical appliances Co. Ltd.	P02-D-3P	450Vac; 24A; 0.5-2.5mm ² ; 110°C	IEC/EN 60998-1/ - 2-2	VDE *
Waterproof connector	B	Dongguan De Zhi Hermetic Technique Co., Ltd.	JXC	400Vac; 13A; 2.5mm ² ; IP68; ta:40°C	IEC/EN 60998-1/ - 2-1	TÜV SÜD B 087842 0003 Rev. 02*
Waterproof connector (T type)	B	Shenzhen Lilutong Connector Co., Ltd.	LLT-L20-15004T001	380V; 1.5mm ² ; IP68	IEC/EN 60998-1/ - 2-1	TÜV SÜD B 090230 0004 Rev. 01*
LED PCB	B	DONGGUAN XINAN PCB CO LTD	XA-A2	V-0, 130°C, Metal base	UL 796, IEC/EN 60598-1/ - 2-5	UL E488497*+ Tested with appliance#
Alt	B	SHENZHEN MINGYU CIRCUIT CO LTD	MY-L	V-0, 130°C, Metal base	UL 796, IEC/EN 60598-1/ - 2-5	UL E488497*+ Tested with appliance#



LED chip	B	Lumileds	LUXEON 5050	VF: 23.4-26.5V, IF: 160mA, Viewing angle: 116o , 2700K- 6500K	IEC TR 62778	Tested with appliance#
Alt	B	Fujian Lightning Optoelectronic Co., Ltd.	5050	VF: 23-27V, IF: 160mA, Viewing angle: 120o , 2700K- 6500K	IEC TR 62778	Tested with appliance#
LED cover	B	Teijin Chemicals Plastic Compounds Shanghai Ltd	L- 1225U(#)(f1), L- 1225V(#)(f1), L-1225Z(#)(f1)	V-2	IEC/EN 60598-1/ - 2-5	Tested with appliance#

Supplementary information:

¹⁾ Provided evidence ensures the agreed level of compliance. See OD-CB2039.

The codes above have the following meaning:

- A - The component is replaceable with another one, also certified, with equivalent characteristics
- B - The component is replaceable if authorised by the test house
- C - Integrated component tested together with the appliance
- D - Alternative component



ANNEX 2		TABLE: Thermal tests of Section 12						P	
	Type reference.....	See below						—	
	Lamp used.....	LED						—	
	Lamp control gear used.....	See below						—	
	Mounting position of luminaire.....	As in normal use						—	
	Supply wattage (W)	See below						—	
	Supply current (A)	See below						—	
	Temperatures in test 1 - 4 below are corrected for ta (°C)	40°C						—	
	- abnormal operating mode.....	Short circuit output of LED driver, LED driver shut down immediately, the temperature was less than temperature under normal operation, so no temperature was recorded.						—	
5.12 (12.4)	- test 1: rated voltage	100V; 240V						—	
	- test 2: 1,06 times rated voltage or 1,05 times rated wattage or 1,1 times constant voltage/current	1.06x100V=106V; 1.06x240V=254.4V						—	
	- test 3: Load on wiring to socket-outlet, 1,06 times voltage or 1,05 times wattage.....	--						—	
	Through wiring or looping-in wiring loaded by a current of A during the test	--						—	
5.12 (12.5)	- test 4: 1,1 times rated voltage or 1,05 times rated wattage or 1,1 times constant voltage/current or 130/150% of rated input voltage.....	0.9x100V=90V; 1.1x240V=264V						—	
Temperature measurements (°C)									
Part	Ambient	Cl. 12.4 – normal						Cl. 12.5 – abnormal	
		test 1		test 2		test 3	limit	test 4	limit
		100V	240V	106V	254.4V				
SWT-LH2400W, LED driver: EUD-600S12ADV; 2528.8W, 25.384A [100V]; 2366.8W, 9.896A [240V]									
Supply cord	40	--	--	46.5	40.7	--	90	--	--
Input terminal block	40	--	--	53.8	42.7	--	110	--	--
Enclosure of junction box	40	--	--	42.5	37.1	--	Ref.	--	--
Input cord of LED driver	40	--	--	73.0	65.1	--	90	--	--
LED driver tc	40	87.5	81.6	--	--	--	89	--	--
Output wire of driver	40	--	--	72.5	67.8	--	90	--	--
Ambient of LED driver	40	--	--	33.9	32.9	--	Ref.	--	--
DC connector	40	--	--	60.8	57.7	--	Ref.	--	--



Metal enclosure	40	--	--	65.8	60.4	--	Ref.	--	--
LED module input cord	40	--	--	75.7	73.6	--	90	--	--
LED PCB	40	--	--	86.8	84.2	--	130	--	--
LED cover	40	--	--	121.1	120.6	--	Ref.	--	--
Lighted object (10 cm)	40	--	--	36.3	37.2	--	90	--	--
Mounting surface	40	--	--	50.6	46.6	--	90	--	--
SWT-LH2400W, LED driver: SS-600VP-56BH; 25.040A 2493.2W [100V]; 10.356A 2398.0W [240V]									
Supply cord	40	--	--	48.0	36.8	--	90	--	--
Input terminal block	40	--	--	53.8	41.6	--	110	--	--
Enclosure of junction box	40	--	--	38.6	36.2	--	Ref.	--	--
Input wire of driver	40	--	--	72.6	63.8	--	90	--	--
LED driver tc	40	87.7	82.8	--	--	--	90	--	--
Output wire of driver	40	--	--	71.5	67.3	--	90	--	--
Ambient of LED driver	40	43.3	43.1	--	--	--	90	--	--
Waterproof connector	40	--	--	61.5	56.6	--	Ref.	--	--
DC connector	40	--	--	59.3	57.9	--	Ref.	--	--
Enclosure	40	--	--	60.8	55.0	--	Ref.	--	--
LED lead wire	40	--	--	75.8	75.0	--	90	--	--
LED PCB	40	--	--	87.8	86.4	--	130	--	--
LED cover	40	--	--	123.3	124.3	--	Ref.	--	--
Light object(10 cm)	40	--	--	35.4	35.3	--	90	--	--
Mounting surface	40	--	--	48.0	36.8	--	90	--	--
SWT-LH2000W, LED driver: EUD-480S10ADV; 20.040A 2025.6W [100V]; 8.260A 1972.8W [240V]									
LED driver tc	--	84.0	79.5	--	--	--	85	--	--
Ambient of LED driver	--	43.7	42.7	--	--	--	Ref.	--	--
SWT-LH2000W, LED driver: SS-240VP-56BH; 20.920A 2084.0W [100V]; 8.444A 1997.2W [240V]									
LED driver tc	--	85.3	78.5	--	--	--	90	--	--
Ambient of LED driver	--	44.0	42.9	--	--	--	Ref.	--	--
SWT-LH400W, EUD-200S560DVA; 4.240A 420.6W [100V]; 1.704A 400.4W [240V]									
LED driver tc	--	87.3	76.3	--	--	--	89	--	--
Ambient of LED driver	--	42.6	42.5	--	--	--	Ref.	--	--
SWT-LH1600W, LED driver: SS-200VP-56BH; 17.648A 1748.0W [100V]; 7.088A 1669.6W [240V]									
LED driver tc	--	85.6	78.8	--	--	--	90	--	--
Ambient of LED driver	--	44.4	42.3	--	--	--	Ref.	--	--



Supplementary information:



ANNEX 3	Screw terminals (part of the luminaire)		N/A
(14)	SCREW TERMINALS		N/A
(14.2)	Type of terminal..... :		—
	Rated current (A)..... :		—
(14.3.2.1)	One or more conductors		N/A
(14.3.2.2)	Special preparation		N/A
(14.3.2.3)	Terminal size		N/A
	Cross-sectional area (mm ²)..... :		—
(14.3.3)	Conductor space (mm)..... :		N/A
(14.4)	Mechanical tests		N/A
(14.4.1)	Minimum distance		N/A
(14.4.2)	Cannot slip out		N/A
(14.4.3)	Special preparation		N/A
(14.4.4)	Nominal diameter of thread (metric ISO thread)..... :	M	N/A
	External wiring		N/A
	No soft metal		N/A
(14.4.5)	Corrosion		N/A
(14.4.6)	Nominal diameter of thread (mm)..... :		N/A
	Torque (Nm)..... :		N/A
(14.4.7)	Between metal surfaces		N/A
	Lug terminal		N/A
	Mantle terminal		N/A
	Pull test; pull (N)..... :		N/A
(14.4.8)	Without undue damage		N/A



ANNEX 4	Screwless terminals (part of the luminaire)		N/A
(15)	SCREWLESS TERMINALS		N/A
(15.2)	Type of terminal.....:		—
	Rated current (A).....:		—
(15.3.1)	Material		N/A
(15.3.2)	Clamping		N/A
(15.3.3)	Stop		N/A
(15.3.4)	Unprepared conductors		N/A
(15.3.5)	Pressure on insulating material		N/A
(15.3.6)	Clear connection method		N/A
(15.3.7)	Clamping independently		N/A
(15.3.8)	Fixed in position		N/A
(15.3.10)	Conductor size		N/A
	Type of conductor		N/A
(15.5)	Terminals and connections for internal wiring		N/A
(15.5.1)	Mechanical tests		N/A
(15.5.1.1.1)	Pull test spring-type terminals (4 N, 4 samples).....:		N/A
(15.5.1.1.2)	Pull test pin or tab terminals (4 N, 4 samples).....:		N/A
	Insertion force not exceeding 50 N		N/A
(15.5.1.2)	Permanent connections: pull-off test (20 N)		N/A
(15.5.2)	Electrical tests		N/A
	Voltage drop (mV) after 1 h (4 samples).....:		N/A
	Voltage drop of two inseparable joints		N/A
	Number of cycles:		—
	Voltage drop (mV) after 10th alt. 25th cycle (4 samples).....:		N/A
	Voltage drop (mV) after 50th alt. 100th cycle (4 samples).....:		N/A
	After ageing, voltage drop (mV) after 10th alt. 25th cycle (4 samples).....:		N/A
	After ageing, voltage drop (mV) after 50th alt. 100th cycle (4 samples).....:		N/A
(15.6)	Terminals and connections for external wiring		N/A
(15.6.1)	Conductors		N/A
	Terminal size and rating		N/A



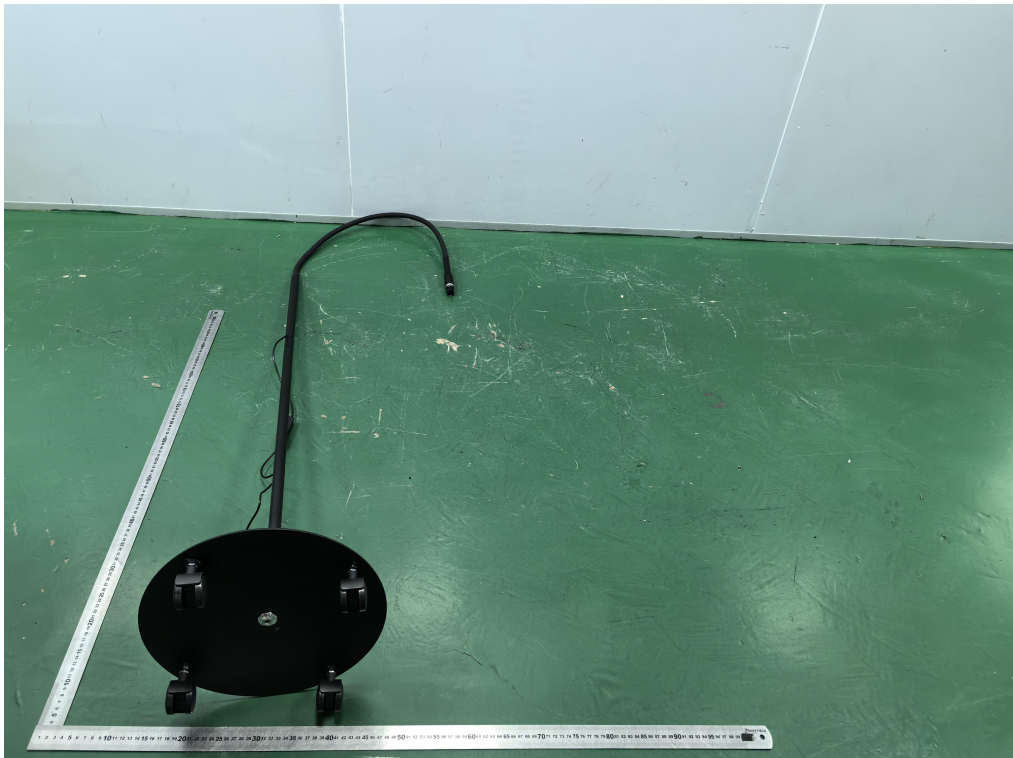
15.6.2	Mechanical tests	N/A
(15.6.2.1)	Pull test spring-type terminals or welded connections (4 samples); pull (N)	N/A
(15.6.2.2)	Pull test pin or tab terminals (4 samples); pull (N)	N/A
(15.6.3)	Electrical tests	N/A
	Tests according 15.6.3.1 + 15.6.3.2 in IEC 60598-1	N/A

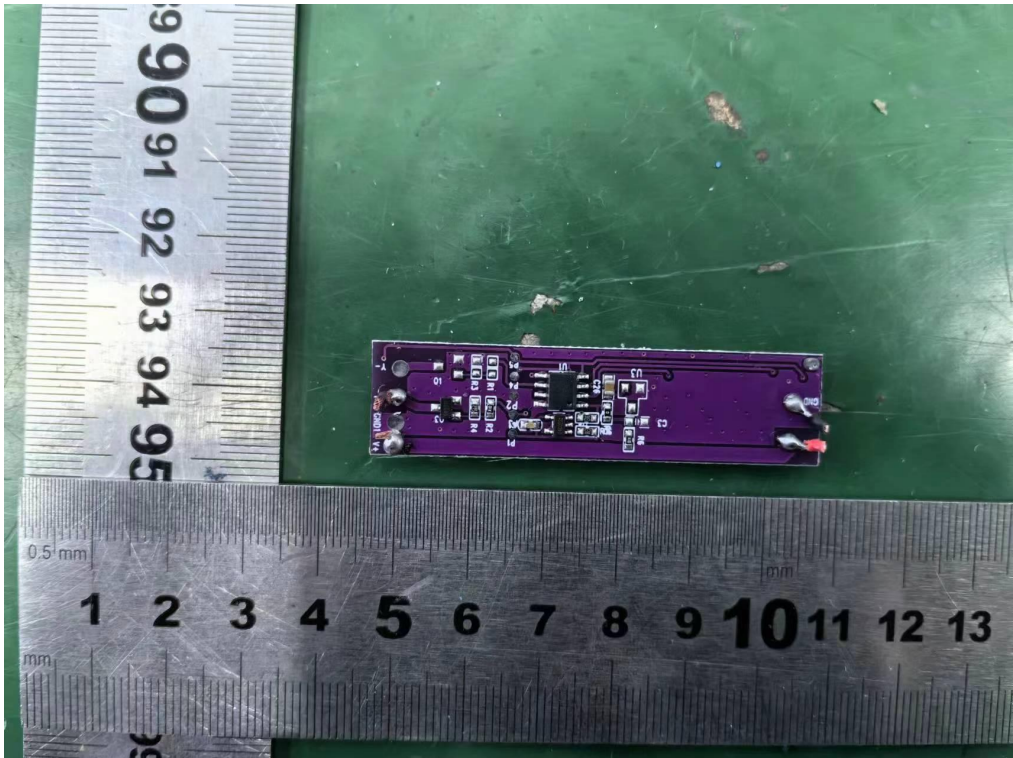
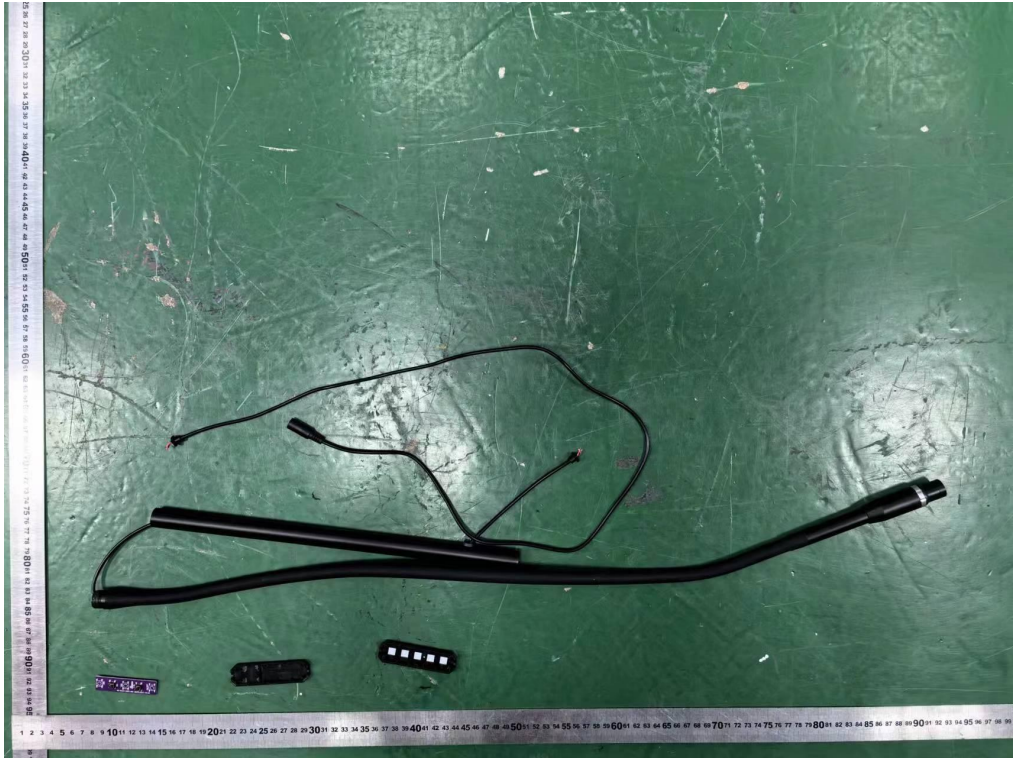
(15.6.3.1) (15.6.3.2)	TABLE: Contact resistance test / Heating tests										N/A
	Voltage drop (mV) after 1 h										—
terminal	1	2	3	4	5	6	7	8	9	10	
voltage drop (mV)											
	Voltage drop of two inseparable joints										
	Voltage drop after 10th alt. 25th cycle										
	Max. allowed voltage drop (mV).....:										—
terminal	1	2	3	4	5	6	7	8	9	10	
voltage drop (mV)											
	Voltage drop after 50th alt. 100th cycle										
	Max. allowed voltage drop (mV).....:										—
terminal	1	2	3	4	5	6	7	8	9	10	
voltage drop (mV)											
	Continued ageing: voltage drop after 10th alt. 25th cycle										
	Max. allowed voltage drop (mV).....:										—
terminal	1	2	3	4	5	6	7	8	9	10	
voltage drop (mV)											
	Continued ageing: voltage drop after 50th alt. 100th cycle										
	Max. allowed voltage drop (mV).....:										—
terminal	1	2	3	4	5	6	7	8	9	10	
voltage drop (mV)											
Supplementary information:											

APPENDIX 1- EUT PHOTO









※※※※※END OF THE REPORT※※※※※